



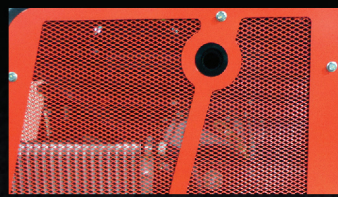
Canycom's highly popular SC75 Concrete Buggy with a rubber track undercarriage transports concrete with ease over rough terrain causing minimal impact to the ground surface. Heavy duty rubber tracks offer balanced weight distribution to travel with ease over wet, muddy ground, rough, uneven terrain and loose sand and gravel. Our SC75 concrete buggy outshines in efficiency and maneuverability compared to wheeled buggies, and has time after time proved to save the user costs in time, money, and energy.

FEATURES



ERGONOMIC CONTROLS

Ergonomically designed single-hand travel lever provides ease of operation.



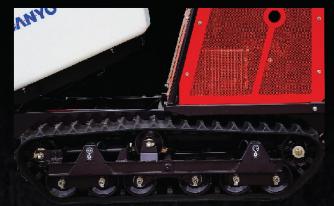
CONCEALED MUFFLER

This design keeps exhaust components free of concrete and debris.



DUAL DUMP CONTROLS

Hand and Foot dumping capabilities provides more improved operator performance.



SEALED UNDERCARRIAGE

Completely sealed undercarriage minimizes track frame maintenance.

SPECIFICATIONS



SC75



SC75PD

Length	95"
Width	35"
Height	57"
Capacity	16 cu/ft
Weight	1576 lbs
Engine	22HP Honda Gas
Speed	0-6MPH
Dumping Direction	1-Way

Length	95"
Width	35"
Height	57"
Capacity	16 cu/ft
Weight	1630 lbs
Engine	22HP Honda Gas
Speed	0-6MPH
Dumping Direction	Pivoting 180°