

# HD9V5



## DIGGING DEPTH

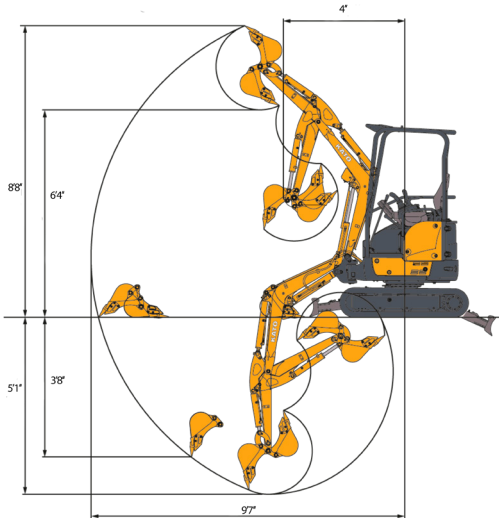
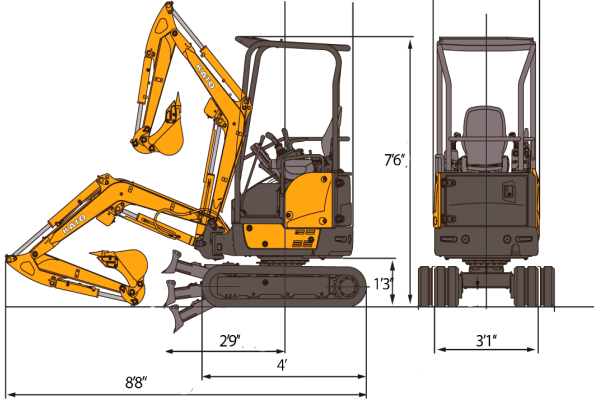
5'1"

## OUTPUT RATING

10 HP

## OPERATING WEIGHT

2,312 LBS



### HD9V5

Working Ranges  
STD Long Arm

		STD	Long Arm
A.	Maximum digging height	8'8"	9'6"
B.	Max. digging depth	5'1"	5'8"
C.	Maximum dumping height	6'4"	7'
D.	Maximum vertical digging depth	3'8"	4'5"
E.	Maximum digging radius	9'7"	10'4"
F.	Front turning radius	4'	4'3"
	at right arm swing	3'1"	3'3"
G.	Maximum digging depth radius	4'3"	4'3"

# KATO



MODEL	HD9V5
<b>General Specifications</b>	
Standart bucket capacity	0,022 m <sup>3</sup>
Standart bucket width	1'2"
Machine weight RS*Canopy/Cab	2,090 lbs
Operating weight RS*Canopy/Cab	2,312 lbs
Transport dimensions (folding)	9'1" x 2'5" x 7'6"
Gradeability	30°
<b>Engine</b>	
Rated output (iso1585)	3.34/3.25 psi
Fuel consumption	3.34/3.25 psi
Engine oil pan capacity	5.9/5.28 psi
<b>Electrical system</b>	
Voltage	12 V
Battery	12 V-40 Ah
<b>Hydraulic system</b>	
Pumps maximum flow rate	2.9 gal/ min x 2
Max Pressure/ Setting	16,2 MPa (165 kgf/cm <sup>2</sup> )
Control	DCS (Direct Control System)
<b>Bucket Performance</b>	
Max bucket digging force (iso 6015)	10,6 MPa (165 kgf/cm <sup>2</sup> )
Max arm digging force (iso 6015)	6,2 kN (630 kgf)
<b>Capacity</b>	
Fuel Tank Capacity	2.9 gal
Engine coolant	0.5 gal



[www.isequipmentkc.com](http://www.isequipmentkc.com)

16400 East Kentucky Rd  
 Independence, Mo 64058  
 (816) 429-1600