



ROTO 70.28 S PLUS



Maximum Load Capacity: 15,400 Lbs
Maximum Lift Height: 92' 0"
Maximum Reach: 76' 0"
Load Capacity at Max. Reach: 1,800 Lbs
Load Capacity at Max. Lift: 6,600 Lbs

www.merlo.com

PERFORMANCE	
Unladen Weight (lbs)	50,155
Maximum Load Capacity (lbs)	15,400
Lift Height (ft)	92' 0"
Maximum Reach (ft)	76' 0"
Load Capacity at Max. Lift Height (lbs)	6,600
Load Capacity at Max. Reach (lbs)	1,800
Boom Side-Shift (in)	-
Frame Leveling (+/- side/front)	12/4
Boom Sections	4

POWERTRAIN	
Engine	FPT
Displacement/Cylinders	4.5/4
Engine Power (HP)	170
Reversible Fan	-
Maximum Speed (mph)	25
Fuel Tank Capacity (gal)	40
AdBlue Tank Capacity (gal)	11
Hydrostatic Transmission	● -2V
EPD	●
Axles	Axial
Reducers	Epicyclic
Brakes	Wet Discs
Automatic Parking Brake	●

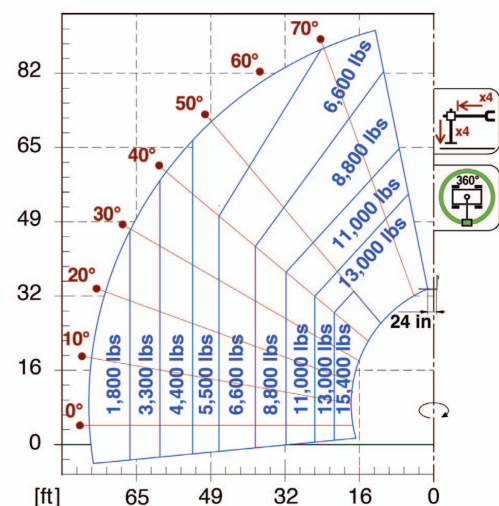
HYDRAULIC	
Hydraulic Pump	LS + FS
Delivery/Pressure (psi-gal/min)	3770/42+26
Hydraulic Oil Tank Capacity (gal)	32
Auxiliary Hydraulic Service on Boom	●
Rear Service Line	-

● Standard ● Optional

DIMENSIONS			
Width (ft)	8' 3"	Length (ft)	27' 2"
Stabilizers fully extended	20' 8"	Wheelbase (ft)	10' 0"
Height (ft)	10' 9"	Turning Radius Over Tires	15' 8"
Ground Clearance	1' 4"		

CAB	
Tilting Cab	●
Cab Finishing	Premium
ACSC	●
FOPS II Cab	●
ROPS Cab	●
Controls	Electronic Joystick
Reverse Shuttle	Dual Reverse

CONFIGURATION	
Hydropneumatic Suspension CS Merlo	-
Hydropneumatic Suspension BSS Merlo	-
Hydropneumatic Suspension EAS Merlo	●
Work lights on cab	●
Sun-shade in the cab	●
Tac-lock	●
Pre-arrangement for aerial work platform	●
Two floating forks	●
Pedal Inching-Control	-
Permanent four-wheel drive	●
4 Wheel Drive	●
3 Steering Modes	●
Standard tires	445/65-R25
Hydraulically controlled stabilizers	Multi-position
Turret rotation	Continuous
Tractor type approval	-



The technical data and other information in this document are not binding. We reserve the right to modify our products without prior notice as part of our policy of continuous improvement