



MERLO

ROTO 50.35 S PLUS



Maximum Load Capacity: 11,000 Lbs

Maximum Lift Height: 115' 0"

Maximum Reach: 88' 7"

Load Capacity at Max. Reach: 1,600 Lbs

Load Capacity at Max. Lift: 5,500 Lbs

PERFORMANCE

Unladen Weight (lbs)	50,700
Maximum Load Capacity (lbs)	11,000
Lift Height (ft)	115' 0"
Maximum Reach (ft)	88' 7"
Load Capacity at Max. Lift Height (lbs)	5,500
Load Capacity at Max. Reach (lbs)	1,600
Boom Side-Shift (in)	-
Frame Leveling (+/- side/front)	12/4
Boom Sections	5

POWERTRAIN

Engine	FPT
Displacement/Cylinders	4.5/4
Engine Power (HP)	170
Reversible Fan	-
Maximum Speed (mph)	25
Fuel Tank Capacity (gal)	40
AdBlue Tank Capacity (gal)	11
Hydrostatic Transmission	CVTronic
EPD	●
Axles	Axial
Reducers	Epicyclic
Brakes	Wet Discs
Automatic Parking Brake	●

HYDRAULIC

Hydraulic Pump	LS + FS
Delivery/Pressure (psi-gal/min)	3,770-42+26
Hydraulic Oil Tank Capacity (gal)	58
Auxiliary Hydraulic Service on Boom	●
Rear Service Line	-

● Standard ● Optional

DIMENSIONS

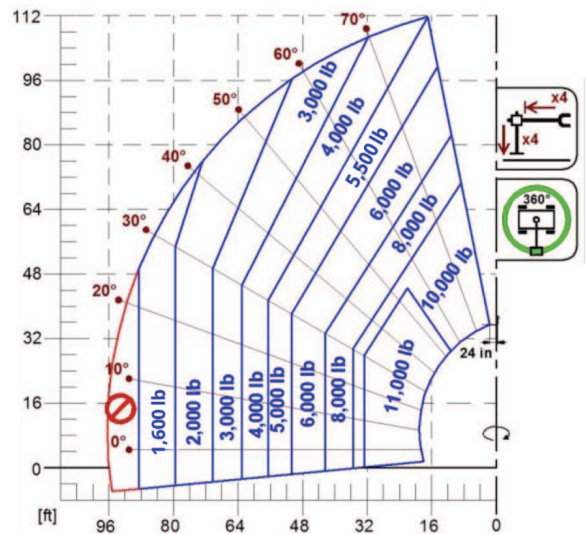
Width (ft)	8' 2"	Length (ft)	28' 1"
Height (ft)	10' 11"	Wheelbase (ft)	12' 4"
Ground Clearance	1' 0"	Turning Radius Over Tires	15' 10"

CAB

Tilting Cab	●
Cab Finishing	Premium
ACSC	●
FOPS II Cab	●
ROPS Cab	●
Controls	Electronic Joystick
Reverse Shuttle	Dual Reverse

CONFIGURATION

Hydropneumatic Suspension CS Merlo	-
Hydropneumatic Suspension BSS Merlo	●
Hydropneumatic Suspension EAS Merlo	●
Work lights on cab	●
Sun-shade in the cab	●
Tac-lock	●
Pre-arrangement for aerial work platform	●
Two floating forks	●
Pedal Inching-Control	-
Permanent four-wheel drive	●
4 Wheel Drive	●
3 Steering Modes	●
Standard tires	445/80 R 25
Hydraulically controlled stabilizers	Multi-position
Turret rotation	Continuous
Tractor type approval	-



The technical data and other information in this document are not binding. We reserve the right to modify our products without prior notice as part of our policy of continuous improvement