



ROTO 50.30 S PLUS



Maximum Load Capacity: 11,000 Lbs
Maximum Lift Height: 96' 4"
Maximum Reach: 83' 0"
Load Capacity at Max. Reach: 880 Lbs
Load Capacity at Max. Lift: 4,400 Lbs

| PERFORMANCE | |
|---|--------|
| Unladen Weight (lbs) | 45,200 |
| Maximum Load Capacity (lbs) | 11,000 |
| Lift Height (ft) | 96' 4" |
| Maximum Reach (ft) | 83' 0" |
| Load Capacity at Max. Lift Height (lbs) | 4,400 |
| Load Capacity at Max. Reach (lbs) | 880 |
| Boom Side-Shift (in) | - |
| Frame Leveling (+/- side/front) | 12/4 |
| Boom Sections | 5 |

| POWERTRAIN | |
|----------------------------|-----------|
| Engine | FPT |
| Displacement/Cylinders | 4.5/4 |
| Engine Power (HP) | 170 |
| Reversible Fan | - |
| Maximum Speed (mph) | 25 |
| Fuel Tank Capacity (gal) | 40 |
| AdBlue Tank Capacity (gal) | 11 |
| Hydrostatic Transmission | ● -2V |
| EPD | ● |
| Axles | Axial |
| Reducers | Epicyclic |
| Brakes | Dry Discs |
| Automatic Parking Brake | ● |

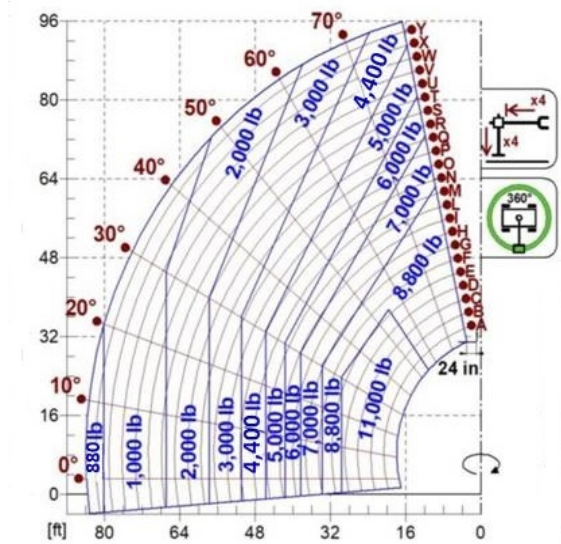
| HYDRAULIC | |
|-------------------------------------|-------------|
| Hydraulic Pump | LS + FS |
| Delivery/Pressure (psi-gal/min) | 3,625-37+26 |
| Hydraulic Oil Tank Capacity (gal) | 32 |
| Auxiliary Hydraulic Service on Boom | ● |
| Rear Service Line | - |

● Standard ● Optional

| DIMENSIONS | | | |
|------------------|--------|---------------------------|--------|
| Width (ft) | 8' 3" | Length (ft) | 25' 5" |
| Height (ft) | 10' 9" | Wheelbase (ft) | 10' 4" |
| Ground Clearance | 1' 2" | Turning Radius Over Tires | 14' 9" |

| CAB | |
|-----------------|---------------------|
| Tilting Cab | ● |
| Cab Finishing | Premium |
| ACSC | ● |
| FOPS II Cab | ● |
| ROPS Cab | ● |
| Controls | Electronic Joystick |
| Reverse Shuttle | Dual Reverse |

| CONFIGURATION | |
|--|----------------|
| Hydropneumatic Suspension CS Merlo | - |
| Hydropneumatic Suspension BSS Merlo | ● |
| Hydropneumatic Suspension EAS Merlo | ● |
| Work lights on cab | ● |
| Sun-shade in the cab | ● |
| Tac-lock | ● |
| Pre-arrangement for aerial work platform | ● |
| Two floating forks | ● |
| Pedal Inching-Control | - |
| Permanent four-wheel drive | ● |
| 4 Wheel Drive | ● |
| 3 Steering Modes | ● |
| Standard tires | 445/65-R22.5 |
| Hydraulically controlled stabilizers | Multi-position |
| Turret rotation | Continuous |
| Tractor type approval | - |



The technical data and other information in this document are not binding. We reserve the right to modify our products without prior notice as part of our policy of continuous improvement