



# ROTO 50.21 S PLUS



**Maximum Load Capacity:** 11,000 Lbs

**Maximum Lift Height:** 69' 0"

**Maximum Reach:** 59' 0"

**Load Capacity at Max. Reach:** 1,760 Lbs

**Load Capacity at Max. Lift:** 5,500 Lbs

PERFORMANCE	
Unladen Weight (lbs)	36,376
Maximum Load Capacity (lbs)	11,000
Lift Height (ft)	69' 0"
Maximum Reach (ft)	59' 0"
Load Capacity at Max. Lift Height (lbs)	5,500
Load Capacity at Max. Reach (lbs)	1,760
Boom Side-Shift (in)	-
Frame Leveling (+/- side/front)	12/4
Boom Sections	4

POWERTRAIN	
Engine	FPT
Displacement/Cylinders	4.5/4
Engine Power (HP)	170
Reversible Fan	-
Maximum Speed (mph)	25
Fuel Tank Capacity (gal)	39
AdBlue Tank Capacity (gal)	11
Hydrostatic Transmission	● -2V
EPD	●
Axles	Drop Portal
Reducers	RR700
Brakes	Dry Discs
Automatic Parking Brake	●

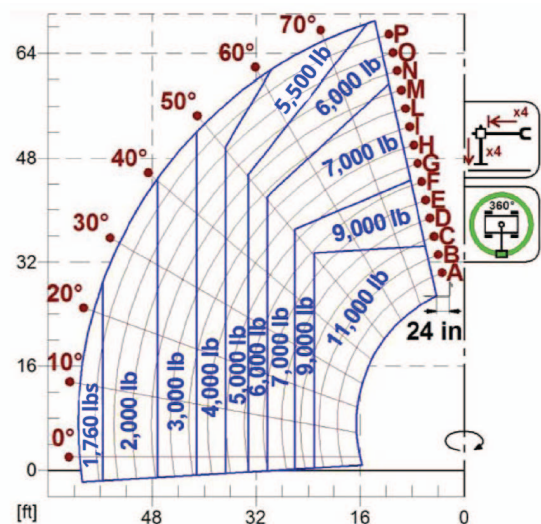
HYDRAULIC	
Hydraulic Pump	LS + FS
Delivery/Pressure (psi-gal/min)	3625-36
Hydraulic Oil Tank Capacity (gal)	32
Auxiliary Hydraulic Service on Boom	●
Rear Service Line	-

● Standard    ● Optional

DIMENSIONS			
Width (ft)	7' 9"	Length (ft)	22' 4"
Stabilizers fully extended	16' 4"	Wheelbase (ft)	10' 0"
Height (ft)	10' 2"	Turning Radius Over Tires	12' 7"
Ground Clearance	1' 0"		

CAB	
Tilting Cab	●
Cab Finishing	Premium
ACSC	●
FOPS II Cab	●
ROPS Cab	●
Controls	Electronic Joystick
Reverse Shuttle	Dual Reverse

CONFIGURATION	
Hydropneumatic Suspension CS Merlo	-
Hydropneumatic Suspension BSS Merlo	-
Hydropneumatic Suspension EAS Merlo	●
Work lights on cab	●
Sun-shade in the cab	○
Tac-lock	●
Pre-arrangement for aerial work platform	●
Two floating forks	●
Pedal Inching-Control	-
Permanent four-wheel drive	●
4 Wheel Drive	●
3 Steering Modes	●
Standard tires	18-22.5
Hydraulically controlled stabilizers	Multi-position
Turret rotation	Continuous
Tractor type approval	-



The technical data and other information in this document are not binding. We reserve the right to modify our products without prior notice as part of our policy of continuous improvement