



MF40.9 CS



Maximum Load Capacity: 8,800 Lbs

Maximum Lift Height: 28' 10"

Maximum Reach: 19' 0"

Load Capacity at Max. Reach: 2,200 Lbs

Load Capacity at Max. Lift: 8,800 Lbs

PERFORMANCE

Unladen Weight (lbs)	20,200
Maximum Load Capacity (lbs)	8,800
Lift Height (ft)	28' 10"
Maximum Reach (ft)	19' 0"
Load Capacity at Max. Lift Height (lbs)	8,800
Load Capacity at Max. Reach (lbs)	2,200
Boom Side-Shift (in)	-
Frame Leveling	± 8°
Boom Sections	3

POWERTRAIN

Engine	FPT
Displacement/Cylinders	4.5/4
Engine Power (HP)	170
Reversible Fan	-
Maximum Speed (mph)	25
Fuel Tank Capacity (gal)	40
AdBlue Tank Capacity (gal)	4.7
CVtronic Transmission	●
EPD	Top
Axles	Portal
Reducers	Epicyclic
Brakes	Dry Discs
Automatic Parking Brake	●

HYDRAULIC

Hydraulic Pump	LS + FS
Delivery/Pressure (psi-gal/min)	3,046-40
Hydraulic Oil Tank Capacity (gal)	25
Auxiliary Hydraulic Service on Boom	●
Rear Service Line	●

● Standard ● Optional

DIMENSIONS

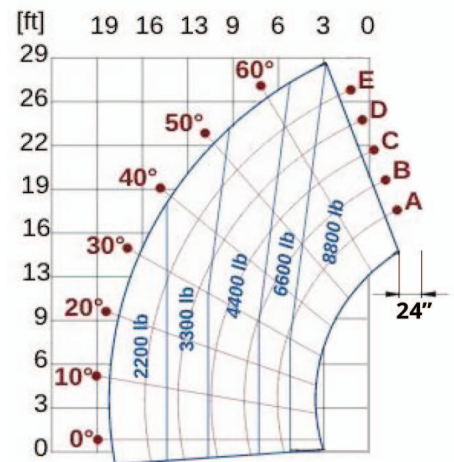
Width (ft)	7' 8"	Length (ft)	18' 0"
Height (ft)	8' 3"	Wheelbase (ft)	9' 6"
Ground Clearance	1' 5"	Turning Radius Over Tires	13' 9"

CAB

Cab Finishing	Premium
MCDC	Full
FOPS II Cab	●
ROPS Cab	●
Controls	Electromechanical Joystick
Reverse Shuttle	Dual Reverse

CONFIGURATION

Hydropneumatic Suspension CS Merlo	●
Hydropneumatic Suspension BSS Merlo	●
Hydropneumatic Suspension EAS Merlo	-
Work lights on cab	●
Sun-shade in the cab	●
Tac-lock	●
Pre-arrangement for aerial work platform	●
Two floating forks	●
Pedal Inching-Control	●
Permanent four-wheel drive	●
4 Wheel Drive	●
3 Steering Modes	●
Standard tires	500/70-R24"
Hydraulically controlled stabilizers	-
Turret rotation	-
Tractor type approval	●
PTO135HP	540/1000
3-point rear linkage	●



The technical data and other information in this document are not binding. We reserve the right to modify our products without prior notice as part of our policy of continuous improvement