



# P 120.10 HM



**Maximum Load Capacity: 26,500 Lbs**

**Maximum Lift Height: 32' 0"**

**Maximum Reach: 17' 3"**

**Load Capacity at Max. Reach: 6,000 Lbs**

**Load Capacity at Max. Lift: 11,000 Lbs**

## PERFORMANCE

Unladen Weight (lbs)	35,840
Maximum Load Capacity (lbs)	26,500
Lift Height (ft)	32' 0"
Maximum Reach (ft)	17' 3"
Load Capacity at Max. Lift Height (lbs)	11,000
Load Capacity at Max. Reach (lbs)	6,000
Boom Side-Shift (in)	± 7
Frame Leveling	± 8°
Boom Sections	2

## POWERTRAIN

Engine	FPT
Displacement/Cylinders	4.5/4
Engine Power (HP)	170
Reversible Fan	-
Maximum Speed (mph)	25
Fuel Tank Capacity (gal)	40
AdBlue Tank Capacity (gal)	11
Hydrostatic Transmission	CVTronic
EPD	STD
Axles	Axial
Reducers	Epicyclic
Brakes	Wet Discs
Automatic Parking Brake	●

## HYDRAULIC

Hydraulic Pump	LS + FS
Delivery/Pressure (psi-gal/min)	3,046-31
Hydraulic Oil Tank Capacity (gal)	39
Auxiliary Hydraulic Service on Boom	●
Rear Service Line	○

● Standard    ○ Optional

## DIMENSIONS

Width (ft)	8' 2"	Length (ft)	18' 9"
Height (ft)	9' 3"	Wheelbase (ft)	10' 7"
Ground Clearance	1' 5"	Turning Radius Over Tires	14' 2"

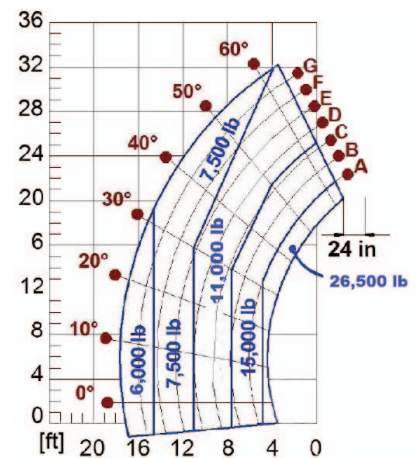
The technical data and other information in this document are not binding. We reserve the right to modify our products without prior notice as part of our policy of continuous improvement

## CAB

Cab Finishing	Premium
ACSC	Full
FOPS II Cab	●
ROPS Cab	●
Controls	Electronic Joystick
Reverse Shuttle	Dual Reverse

## CONFIGURATION

Hydropneumatic Suspension CS Merlo	-
Hydropneumatic Suspension BSS Merlo	-
Hydropneumatic Suspension EAS Merlo	○
Work lights on cab	●
Sun-shade in the cab	●
Tac-lock	●
Pre-arrangement for aerial work platform	○
Two floating forks	●
Pedal Inching-Control	●
Permanent four-wheel drive	●
4 Wheel Drive	●
3 Steering Modes	●
Standard tires	17.5-25"
Hydraulically controlled stabilizers	-
Turret rotation	-
Tractor type approval	-
PTO	-
3-point rear linkage	-



July 2022

IMPORTED & DISTRIBUTED BY



ams-merlo.com

803-327-4949

1205 Galleria Blvd., Rock Hill, SC 29730