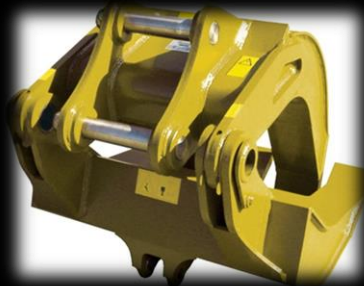


MG

Demolition / Material Handling Grapple

offered by Okada America, Inc.



MG Demolition and Material Handling Grapple

Designed to excel in severe, heavy-duty demolition and material/waste handling applications.

The MG grapple has earned its reputation with by performing well in tuff applications. The MG Demolition and Material Handling Grapple continues that tradition with a design strength that is unparalleled in the industry as it can withstand the full breakout force of the excavator on a single tine.

The MG series is offered in five different sizes for excavators ranging from 25,000 to 110,000 pounds. And, they provide flexibility in mounting as the Demolition and Material Handling Grapple can be mounted directly on the bucket pins (pin-on) or mounted using a pin-grabbing coupler.



The fully versatile MG Demolition and Material Handling Grapple provides performance, production and profits in a wide-range of applications and operations:

- Scrap yards (outperform magnets 3 to 1)
- Recycling facilities (easily sort and separate material and quickly load crushers or shredders)
- Demolition (residential, commercial and industrial demolition is easier and safer)
- Land clearing (tree stumps can be extracted quickly)
- Reconstruction (no need for cable-and-sling as large, bulky objects are moved easily)
- Rock handling (precisely pick and place rip-rap and load shot rock without damaging your haul truck)

Whether your job calls for demolition, scrap handling, rock handling, log and pipe handling or land clearing, the MG Demolition and Material Handling Grapple has what it takes to get your job done.

Demolition and Material Handling Grapple Specifications

Model	MG-30C-2	MG-40C-2	MG-50C-2	MG-70C-2	MG-100C-2
Jaw Open (in.)	80	94	94	116	130
Jaw Closed (in.)	12	16	16	20	22
Upper Jaw Width (in.)	26	26	32	34	36
Lower Jaw Width (in.)	44	44	51	56	61
Height (in.)	48	54	54	67	72
Weight (in.)	2,000	2,700	3,600	5,000	7,000
Upper Jaw Tine Width (in.)	7.5	7.5	9.5	10	11
Lower Jaw Outer Tine Width (in.)	7.5	7.5	8.25	10	11
Lower Center Tine Width (in.)	7.5	7.5	8.25	10	11
Recommended Carrier Weight (in.)	25,000-35,000	35,000-46,000	46,000-65,000	65,000-88,000	88,000-110,000

Key features include:

- **Heavy-duty AR500 material** used in the tips and **AR400 shells** made of high tensile, high alloy, abrasion-resistant material in high wear areas
- Reinforced heavy-duty box tine design for maximum strength
- Large hardened pivot sleeves and bronze bushings
- Adjustable stiff link
- Wider curved bucket design produces larger volume of material per load
- Full one-year 2,000 hour warranty (including finger tips)

For sales and service, contact your Okada Distributor:



904 Medina Rd.
Medina, Ohio 44256
Tel: 216-239-2666
Website: www.okadaamerica.com