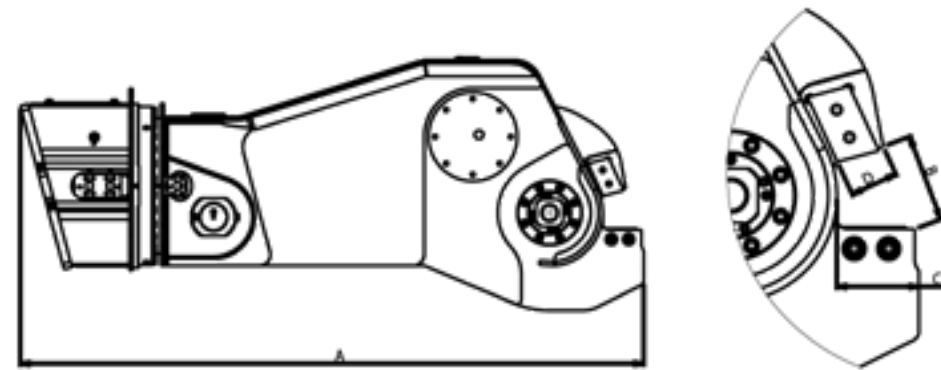


S Specifications



Ingenious, reliable, service-friendly and maximal productivity.
That is the power of Rotar!

Type RRC	25
Information	
Machine class (t) on boom	25
Machine class (t) on dipper	38
Weight (kg)*	3500
Dimensions	
Dimension A (mm)	2884
Dimension B (mm)	204
Dimension C (mm)	190
Dimension D (mm)	111
Attachment	
Rotar Hole-pattern	200
Hydraulic	
Max. operating pressure cylinder (bar)	250
Oil volume cylinder (L/min)	450
Max. operating pressure motor (bar)	170
Oil volume motor (L/min)	50

* Weight exclusive adapterplate with bracket.

** Technical specifications are subject to change without prior notice.



RRC-serie



Rotar International BV

Address Sisalstraat 85, 8281 JK Genemuiden (NL)

Tel. +31(0) 38 385 54 71

Fax +31(0) 38 385 54 02

E-mail info@rotar.com

Website www.rotar.com



GET THE
RED CRUSH!

RRC

Rotar Rail Cutter

The Rotar Rail Cutter equals enormous capacity. With its fast cycle times and incredible cutting power, the RRC will process tonnes of rail in the blink of an eye!

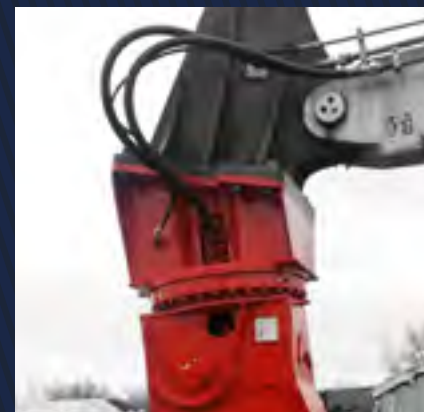


Upper head and slewing ring

The RRC Series is fitted with a strong rotating upper head and a heavy-duty, double-rowed slewing ring. The hydraulic motors generate a high torque, allowing the RRC Series to be moved in every possible position. The RRC is constructed from high-grade performance steel and wear-resistant materials. This includes an incredibly strong bottom and upper jaw with replaceable cutting knives and main axes with wide pivots as the basis.

Speciaal ontwikkelde hydraulische cilinder

The hydraulic cylinder with a pressure relief valve, developed by Rotar, guarantees maximum cutting forces under controlled circumstances.



The double hose connection

The double hose connection on the swivel and large diameter of hoses, bores, and pipes creates optimum oil flow. This connection stops heat building up in the hydraulic system, reducing the RRC's fuel consumption.

3